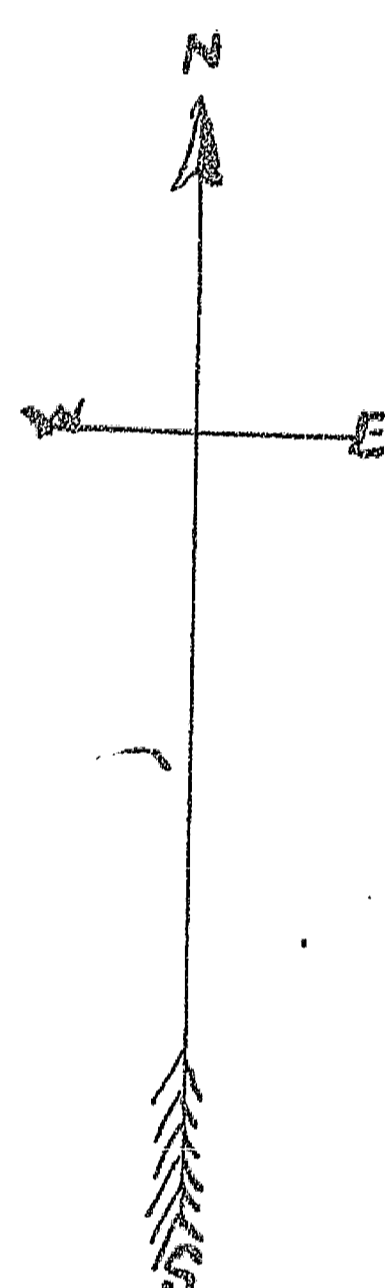


FILED FOR RECORD the 10th day of May A. D. 1906, at 10 O'CLOCK A. M.

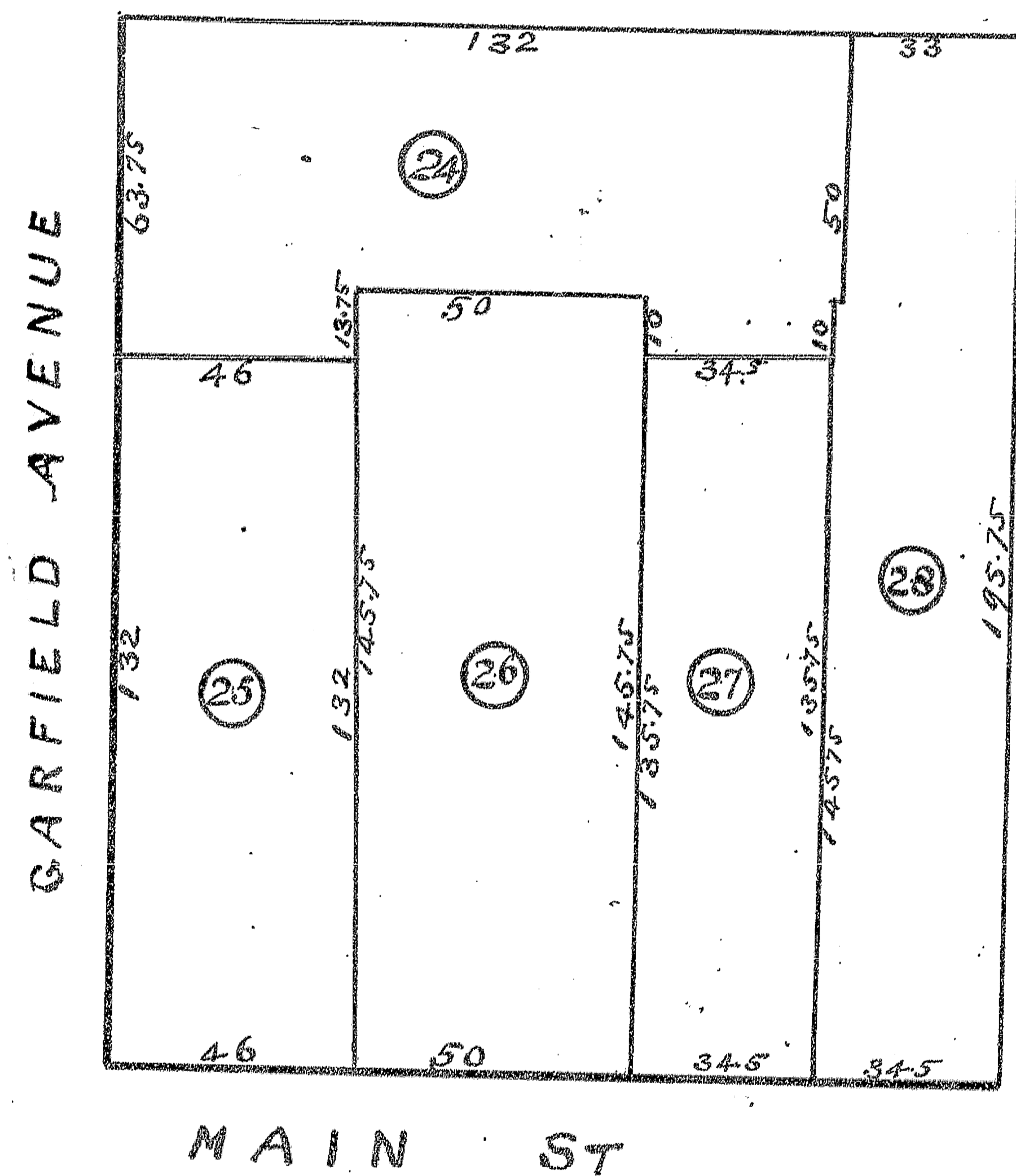
REVENUE PLAT 1906

OF

A RESUBDIVISION
OF
LOTS 17, 18 & 19 OF JOHNSON & CHAPPELL'S SUBDIVISION
OF WEST HALF OF TEN ACRE LOTTEN OF ORIGINAL PLAT
OF GALESBURG KNOX CO. ILL.



SCALE 40 FT = 1 inch



STATE OF ILLINOIS, }
Knox County, } ss. I, C. S. RICHEY, County Surveyor of said Knox County, do hereby certify that the foregoing and annexed is a true and correct Plat and description of Lands advertised for Survey and Platting by the County Clerk, as taken from the records of Knox County, and by measurements and survey, as provided for in Sections 62 and 63, Chapter 120, Revised Statutes of Illinois, 1903.

Dated this 10th day of May 1906

Approved by me, this 10th day of May 1906

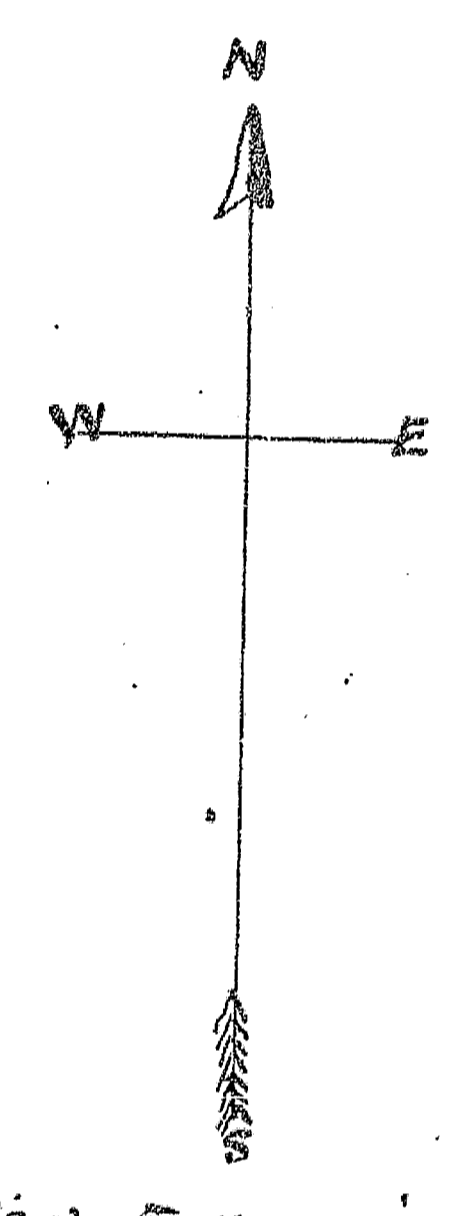
C. S. Richey, County Surveyor.
Frank L Adams, County Clerk.

FILED FOR RECORD 30th day of June A. D. 1906, at 10 1/2 O'CLOCK A. M.

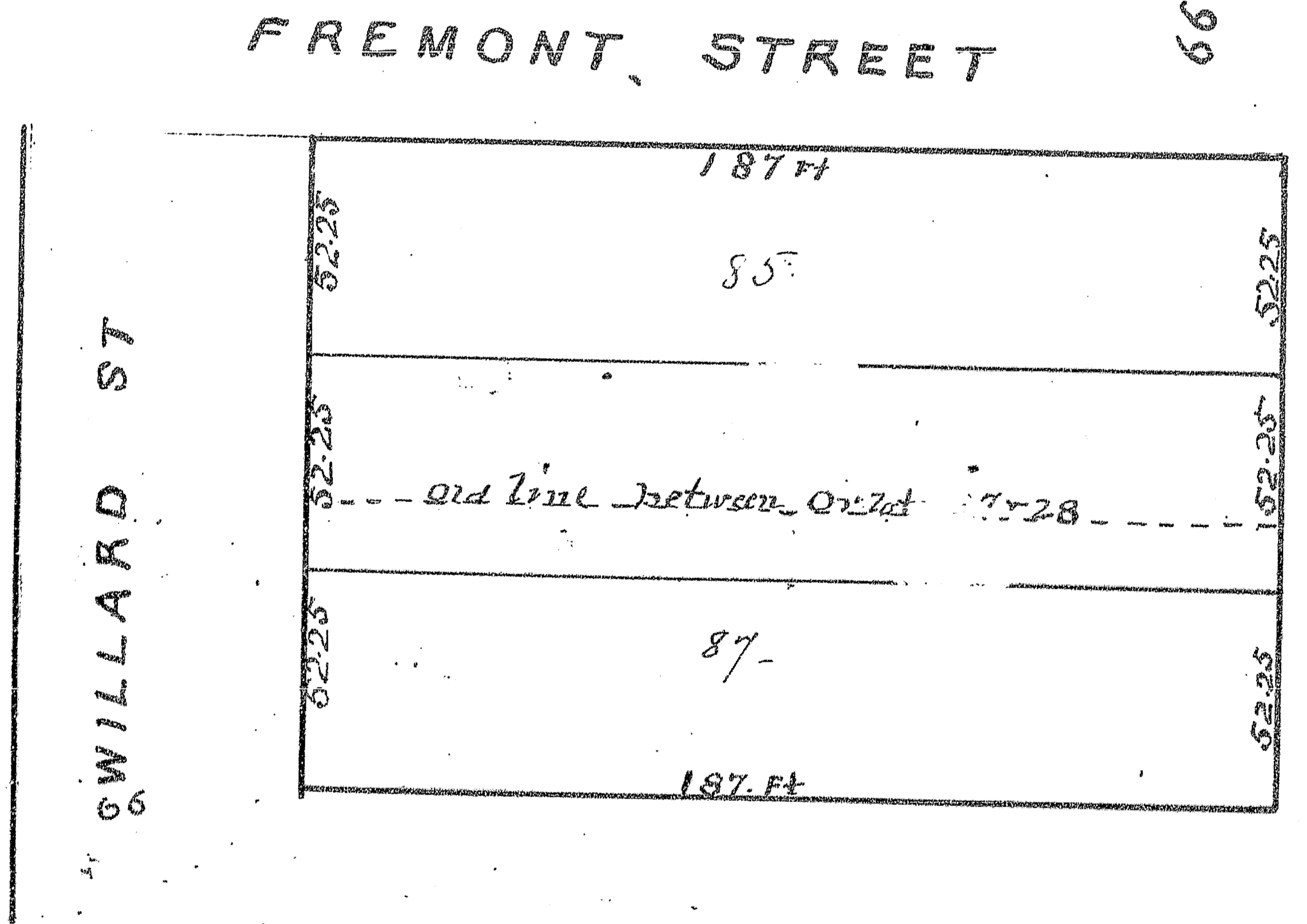
REVENUE PLAT 1906

OF

A SUBDIVISION OF LOTS 27 & 28 OF BLOCK 5
OF THE FAIR GROUND ADDITION
TO GALESBURG KNOX COUNTY ILL.



Scale 50 Ft = 1 inch



STATE OF ILLINOIS, }
Knox County, } ss. I, C. S. RICHEY, County Surveyor of said Knox County, do hereby certify that the foregoing and annexed is a true and correct Plat and description of Lands advertised for Survey and Platting by the County Clerk, as taken from the records of Knox County, and by measurements and survey, as provided for in Sections 62 and 63, Chapter 120, Revised Statutes of Illinois, 1903.

Dated this 29th day of June 1906

Approved by me, this 29th day of June 1906

C. S. Richey, County Surveyor.
Frank L Adams, County Clerk.